

## Brighton Road, Horsham

Offers Over £535,000

3 2 2



A charming period home with a South West facing Garden, boasting two reception rooms, a 17ft refitted Kitchen Dining Room, 18ft Garage and En Suite to the Master Bedroom.

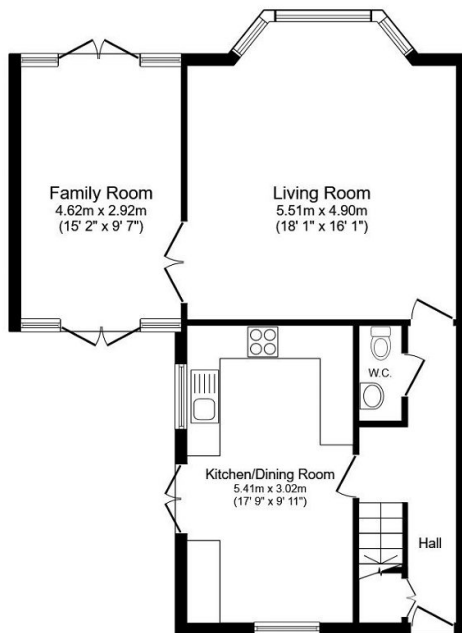
Tenure: Freehold

Council Tax Band: E

EPC: Current D - Potential B

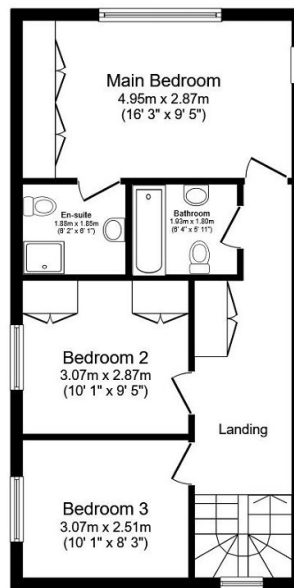
## Key Features

- Watch The Video Tour
- 18ft x 16ft Living Room
- En Suite To Master Bedroom
- South West Facing Garden
- 15ft Family Room
- Charming Period Home
- Three Generous Bedrooms
- 18ft Garage & Parking
- 17ft Kitchen Dining Room
- Popular School Catchment



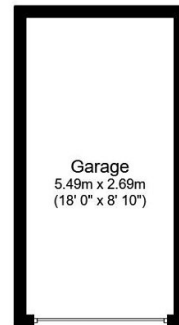
### Ground Floor

Floor area 65.7 sq.m. (707 sq.ft.)



### First Floor

Floor area 49.7 sq.m. (535 sq.ft.)



### Garage

Floor area 14.6 sq.m.  
(157 sq.ft.)

**TOTAL: 130.0 sq.m. (1,399 sq.ft.)**

This floor plan is for illustrative purposes only. It is not drawn to scale. Any measurements, floor areas (including any total floor area), openings and orientations are approximate. No details are guaranteed, they cannot be relied upon for any purpose and do not form any part of any agreement. No liability is taken for any error, omission or misstatement. A party must rely upon its own inspection(s). Powered by [www.Propertybox.io](http://www.Propertybox.io)